

TEDDY BEAR HEART TAM



- Materials:** approx. 25grams black and 2grams red double knitting/light worsted yarn
Needles: 4mm straights
Notions: darning needle, 14cm-15cm diameter circular plate or saucer or circle of heavy cardboard (for pressing the tam into shape), row counter (optional but very useful)
Gauge: 28 sts, 36 rows = 10cm X 10cm (4" x 4"); change to smaller/larger needles if you don't match the gauge
Note: Tam is knitted flat in stockinette stitch, then seamed in the centre back. Edge stitches are used to create clean edges to make seaming easier. It is a hat with eight equal increases and decreases, aka an eight point tam. See the grid on page two for a graphical presentation of the tam and heart patterns.

EXPLANATIONS

k = knit **k2tog** = knit 2 stitches together **st(s)** = stitch(es)
p = purl **MC** = main colour (black) **CC** = contrast colour (red)
rep = repeat **RS** = right side **WS** = wrong side

edge st = knit in MC the first and the last stitch on all rows including purl rows

inc 1 st = increase 1 stitch = knit into the front and the back of next stitch

st st = stockinette stitch = knit right side rows, purl wrong side rows

* repeat directions following * as many times as indicated

mattress stitch = http://knitting.about.com/od/finishingtouches/ss/mattress_stitch.htm

Tam band (2 rows of k1 p1 rib):

With MC cast on 50 sts leaving a 30cm tail of yarn (use any cast on method you like)

Row 1 – k1 edge st, k1 p1 until last st, k1 edge st

Row 2 – k1 edge st, k1 p1 until last st, k1 edge st

Begin increases:

Row 3 (RS) – k1 edge st, *inc 1 st, k5; rep 7 times from * until last st, k1 edge st (58 sts)

Row 4 and all even (WS) rows – k1 edge st, p until last st, k1 edge st

Row 5 – k1 edge st, *inc 1 st, k6; rep 7 times from * until last st, k1 edge st (66 sts)

Row 7 – k1 edge st, *inc 1 st, k7; rep 7 times from * until last st, k1 edge st (74 sts)

Row 9 – k1 edge st, *inc 1 st, k8; rep 7 times from * until last st, k1 edge st (82 sts)

Tam rim:

Rows 10 to 16 – k7 rows st st with no more increases (82 sts)

Knit heart patterns (add the CC and strand it loosely across the back as you knit):

Row 17 (RS) – k1 edge st, *k4 MC, k2 CC, k1 MC, k2 CC, k1 MC rep 7 times from * until last st, k1 edge st

Row 18 (WS) – k1 edge st, *p1 MC, p5 CC, p4 MC rep 7 times from * until last st, k1 edge st

Begin decreases:

Row 19 (RS) – k1 edge st, *k2tog MC, k2 MC, k5 CC, k1 MC; rep 7 times from * until last st, k1 edge st (74 sts)

Row 20 (WS) – k1 edge st, *p2 MC, p3 CC, p4 MC rep 7 times from * until last st, k1 edge st

Row 21 (RS) – k1 edge st, *k2tog MC, k3 MC, k1 CC, k3 MC; rep 7 times from * until last st, k1 edge st (66 sts)

Continue decreases in MC only:

Row 22 and all even (WS) rows – k1 edge st, p until last st, k1 edge st

Row 23 – k1 edge st, *k2tog, k6; rep 7 times from * until last st, k1 edge st (58 sts)

Row 25 – k1 edge st, *k2tog, k5; rep 7 times from * until last st, k1 edge st (50 sts)

Row 27 – k1 edge st, *k2tog, k4; rep 7 times from * until last st, k1 edge st (42 sts)

Row 29 – k1 edge st, *k2tog, k3; rep 7 times from * until last st, k1 edge st (34 sts)

Row 31 – k1 edge st, *k2tog, k2; rep 7 times from * until last st, k1 edge st (26 sts)

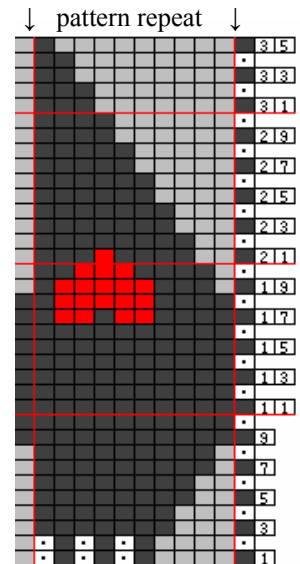
Row 33 – k1 edge st, *k2tog, k1; rep 7 times from * until last st, k1 edge st (18 sts)

Row 35 – k1 edge st, *k2tog; rep 7 times from * until last st, k1 edge st (10 sts)

Cut yarn, leaving a 10cm tail, thread tail on darning needle and pull through remaining 10 sts and secure

Finishing:

With bottom 30cm tail, join back seam using mattress stitch. Sew in remaining MC and CC tails. Insert the 15cm plate and centre it in the middle of the tam. Using a steam iron press tam on top, press edges on both sides into a neat fold, taking care not to press directly on the ribbed band.





TEDDY BEAR HEART TAM

Top of Tam

- = with MC knit on right side, purl on wrong side
- = with MC purl on right side, knit on wrong side
- = with CC knit on right side, purl on wrong side
- = do not knit, shows the increases and decreases

